



(U//FOUO) QUANTUMTHEORY

(U//FOUO) name redacted S32X



(U) Classification of Presentation

- This presentation is classified:

TOP SECRET // COMINT // REL TO USA, FVEY // 20320108

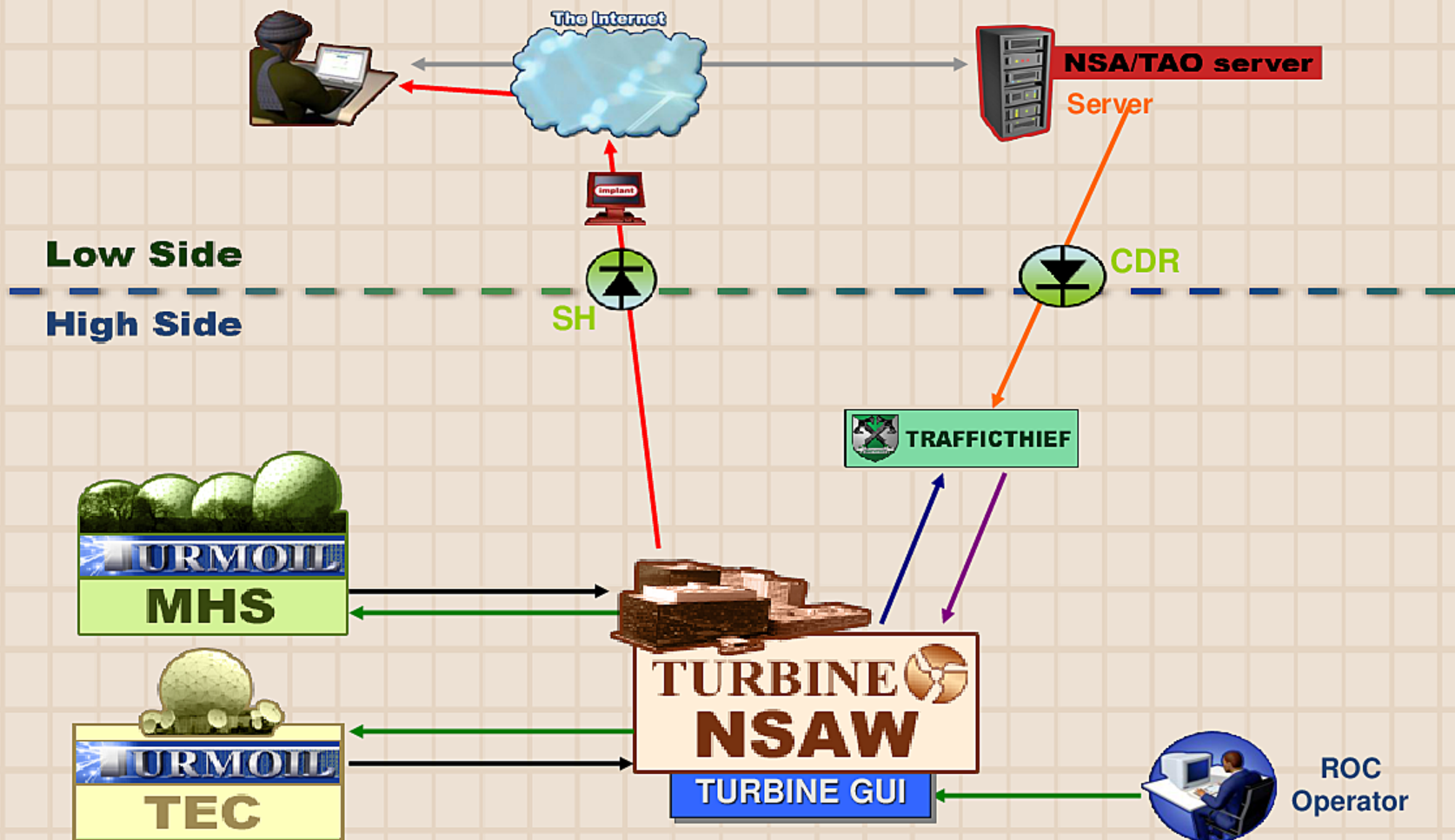


(U) What is QUANTUMTHEORY

- (U//FOUO) Nothing to do with “Quantum Computing”
- (S//SI//REL) Protocol injection technique
 - Passive
 - Active
- (S//REL) Not Man-in-the-Middle
 - But can be used to gain that position
- (S//REL) Man-on-the-Side
- (S//REL) Mostly Low Latency... mostly



(U) Man on the Side?



(C) Components of QUANTUM Architecture

- (S//REL) TURMOIL
 - (or LPT, LPT-D, what else can you kludge for tipping... cough.. NINJANIC)
 - Passive Sensor

- (S//REL) TURBINE
 - Active Mission Logic of Remote Agents

- (C//REL) ISLANDTRANSPORT
 - Messaging Fabric

- (S//REL) SURPLUSHANGER
 - High->Low diodes

- (S//REL) STRAIGHTBIZARRE or DAREDEVIL
 - Implant / Shooter



(C) Legacy QUANTUMTHEORY techniques

- (TS//SI//REL) QUANTUMINSERT
 - HTML Redirection
- (TS//SI//REL) QUANTUMSKY
 - HTML/TCP resets
- (TS//SI//REL) QUANTUMBOT
 - IRC botnet hijacking



(U) New Hotness

- (TS//SI//REL) QUANTUMBISCUIT
 - Redirection based on keyword
 - Mostly HTML Cookie Values

- (TS//SI//REL) QUANTUMDNS
 - DNS Hijacking
 - Caching Nameservers

- (TS//SI//REL) QUANTUMBOT2
 - Combination of Q-BOT/Q-BISCUIT for web based Command and controlled botnets

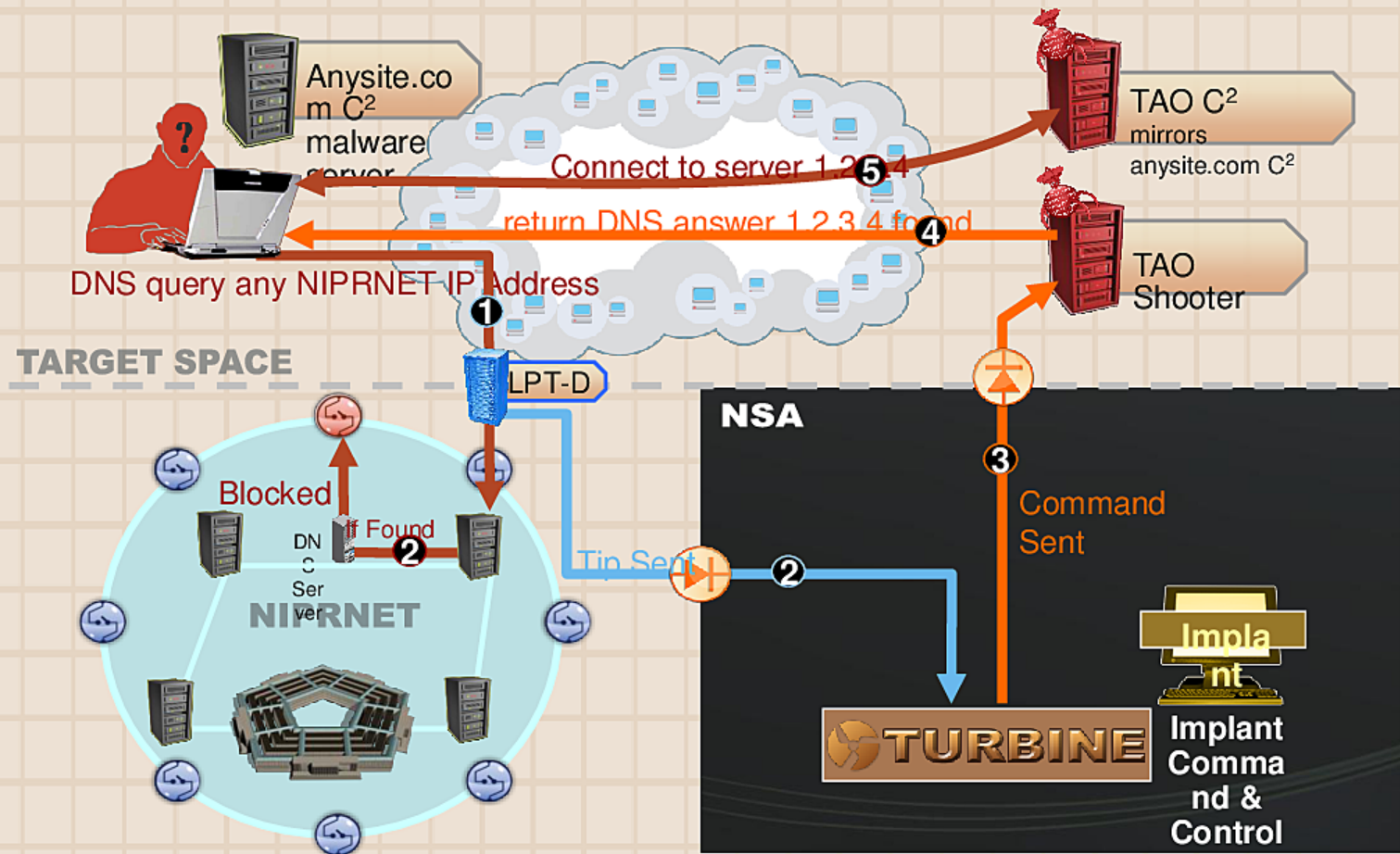


(U) Experimental

- (TS//SI//REL) QUANTUMCOPPER
 - File download disruption
- (TS//SI//REL) QUANTUMMUSH
 - Virtual HUFFMUSH / Targeted Spam Exploitation
- (TS//SI//REL) QUANTUMSPIM
 - Instant Messaging (MSN chat, XMPP)
- (TS//SI//REL) QUANTUMSQUEEL
 - Injection into MySQL persistent database connections
- (TS//SI//REL) QUANTUMSQUIRREL
 - Truly covert infrastructure, be any IP in the world



(U//FOUO) QUANTUMDEFENSE



(C) Where/What can you QUANTUM

- (S//SI//REL) Menwith Hill Station (USJ-759, USJ-759A,...)
 - Operational: Q-INSERT, Q-SKY, Q-DNS, Q-BISCUIT, Q-BOT
 - Tested: Q-COPPER, Q-SQUIRREL, Q-BOT2

- (S//SI//REL) Misawa AFB (USF-799,...)
 - Operational: Q-INSERT

- (S//SI//REL) INCENSOR (DS-300) – with help from GCHQ
 - Operational: Q-BOT, Q-BISQUIT, Q-INSERT
 - Tested: Q-SQUEEL, Q-SPIM

- (TS//SI//REL) NIPRNET Gateways
 - Operational: Q-DNS

- (S//SI//REL) **Coming Soon....**
 - **SMOKEYSINK**
 - **SARATOGA**





Questions?

contact info redacted

